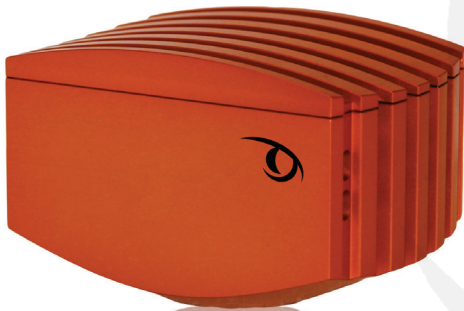


KITE EM247 CL

Digital Monochrome EMCCD camera

658 x 496 • 37Hz • 16 bit • 

DATA SHEET



Key Features and Benefits

- ✓ **658 x 496 EMCCD sensor.** Enables optimum image resolution in low light imaging applications
- ✓ **B/W EMCCD technology.** Enables high sensitivity imaging with up to 1000x on-chip gain
- ✓ **16 bit CameraLink output.** Provides wide dynamic range
- ✓ **Optional GigE output.** Provides ease of use and simple connectivity
- ✓ **53% QE from Virtual Phase sensor.** Optimum Photon collection
- ✓ **Interline Frame Transfer.** No mechanical shutter required, vibration-less CCD readout
- ✓ **High frame rate imaging.** Optimum image sharpness even in low light condition
- ✓ **Ultra compact and rugged.** Ideal for OEM integration into Electro-Optic systems

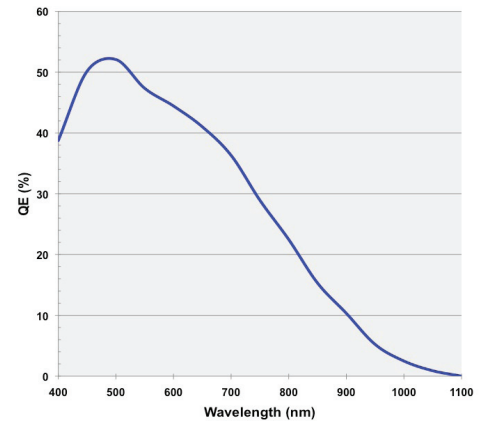
Specification for KITE EM247 CL

Sensor	Texas Instruments TC247SPD
Sensor Type	1/2" Interline Frame Transfer Impactron
Active Pixel	658 x 496
Pixel Size	10 μ m x 10 μ m
Active Area	6.58mm x 4.96mm
Full Well Capacity	24000 electrons
Shift Register Well Depth	100000 electrons
Non Linearity	< 1%
Readout noise	< 1 electrons with EM gain ON
	< 20 electrons with EM gain OFF
Dynamic Range	65 dB
Frame Rate	40Hz
Digital Output Format	16 bit CameraLink (base configuration)
Peak Quantum Efficiency	53% @ 530nm
Spectral response	350 - 1100nm
Readout mode	Progressive scan
Cooling	-20°C with ambient air @ +20°C
Binning	2x2, 4x4, 8x8
Antiblooming protection	Yes
Lens Mount	C mount
Synchronisation	Trigger IN and OUT - TTL compatible
Power Supply	12V DC \pm 10%
Total power consumption	< 12W
Operating case temperature	-20°C to +55°C
Storage Temperature	-30°C to +85°C
Dimensions	97mm x 68mm x 61mm
Weight (no lens)	< 550g

Raptor Photonics Limited reserves the right to change this document at any time without notice and disclaims liability for editorial, pictorial or typographical errors.

Connector Pin out

Quantum Efficiency for KITE
monochrome Camera

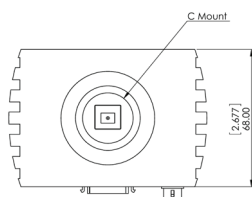


Sample Applications

Raptor's EMCCD camera cores are ideally suited for cutting edge low light scientific imaging application such as:

- Fluorescence Microscopy
- Gel Imaging
- Ion Imaging
- Bioluminescence
- Hyperspectral Imaging
- X-ray imaging
- Astronomy

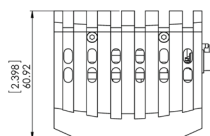
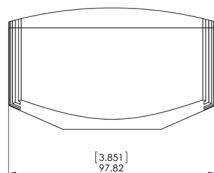
Dimensions



Unit: [inch] mm

Power connector on camera: Hirose HR10-7R-4P

Cable connector (socket): Hirose HR10-7P-4S



Ordering Information

Camera

KITE EM247 digital B/W camera K1247-CL

KITE Power Supply cable kit RPL-KI-CBL

Optional Accessories

Epix base CL card RPL-EPIX-EB1

Epix base Notebook CL card RPL-EPIX-ECB1-54

EPIX XCAP Ltd software RPL-XCAP-LTD

MicroManager Driver RPL-MM-D

CameraLink Cable, 2m¹ RPL-CL-CBL-2M

Optical Visible lenses² RPL-xx-xxxx

Note: ¹ Longer CL cable available

² Please consult us to check our range of lenses

Document #: K1247-CL 0511R1

Headquarters

Willowbank Business Park
Larne, Co Antrim
BT40 2SF
Northern Ireland

Phone: +44(0)2828 270 141
Fax: +44(0)2828 275 685
Email: sales@raptorphotonics.com



Visit our web site on: www.raptorphotonics.com

Equipment may require UK Government authorisation for export purposes