



Tel: + 44 (0) 1635 30345  
Fax: + 44 (0) 1635 32630  
Email: [imaging@alrad.demon.co.uk](mailto:imaging@alrad.demon.co.uk)  
WWW: [www.alrad.co.uk](http://www.alrad.co.uk)

# ADVISION<sup>®</sup> AVCAM 705

## MINATURE & WEATHER-PROOF COLOUR VIDEO CAMERA



### Description


The AVCAM 705 weather proof camera has been designed to meet the rigours of outdoor use either on moving vehicles or in fixed installations.

The camera is available with a choice of fixed focus lenses to suit most applications.





The automatic parameters can be adjusted manually via a PC serial control using an optional I<sup>2</sup>C JIG under Windows 95/98 (see over).

### Features

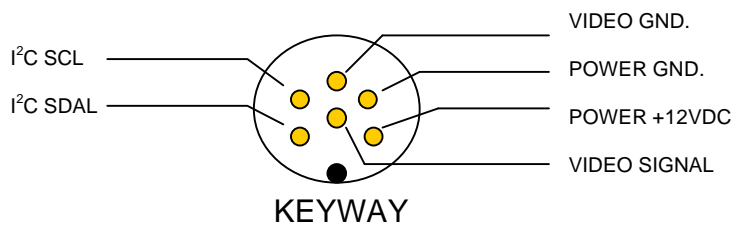
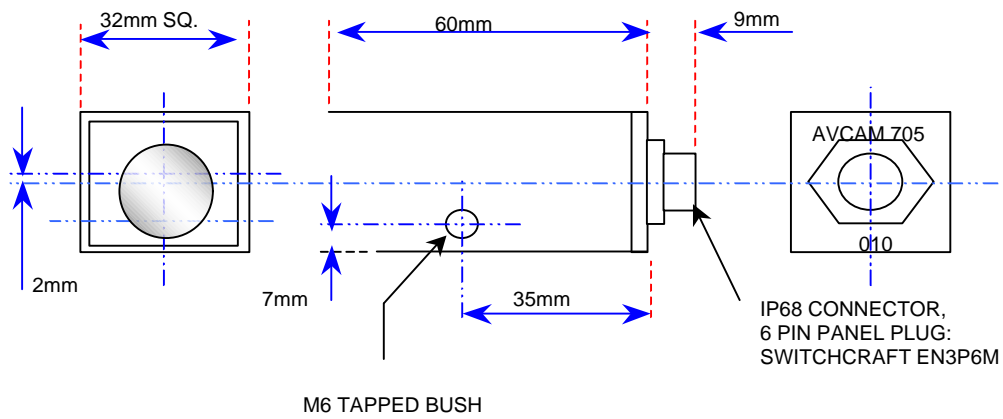
- Only 3.2 x 3.2 x 6 cms
- Rugged construction
- Sealed to IP67
- Corrosion resistant
- Wide input voltage range: 6 - 17V DC

AVCAM 705		I <sup>2</sup> C/PC S/W Controllable Parameters
Specifications		
<b>Imaging area</b>	¼ " format 3.61 mm (H) x 2.70 mm (V)	
<b>Imaging System</b>	Interline field accumulation PAL standard	➤ Mirror Image
<b>H scanning frequency</b>	15.625 kHz	➤ AGC/Gain control
<b>Vertical scanning frequency</b>	50.00 kHz	➤ Brightness/Contrast
<b>Number of scanned lines</b>	625 lines	➤ ELC target level control
<b>Frames per second</b>	25 frames	➤ Flickerless mode
<b>Synchronisation</b>	Internal synchronisation	➤ Manual Shutter
<b>Video Output</b>	VBS 1 V(p-p) / 75 composite signal	➤ Edge Enhancement
<b>Resolution</b>	Horizontal: Min. 330 lines (centre area) Vertical: Min. 350 lines (centre area)	➤ Black Level
<b>S/N ratio</b>	46 dB (with AGC OFF)	➤ White Balance
<b>Minimum illumination</b>	10 lx (at F2.8), 5 lx (at F2.0)	➤ Colour Matrix
<b>AGC</b>	On (preset)	➤ Negative/Positive
<b>ELC</b>	On (preset)	➤ Gamma
<b>White Balance</b>	ATW (preset)	➤ Knee Control
<b>External connector</b>	6 pin connector – sealed to IP68 (1) Power input (2) GND (3) Video output (4) GND (5) I <sup>2</sup> C SCL (6) I <sup>2</sup> C SDA	
<b>Power supply range</b>	6 – 17V DC	
<b>Power consumption</b>	132mA /1.6W @ 12V DC	
<b>Temperature range</b>	Operating (Actual use): -10°C ~ +50°C Guaranteed performance: -5°C ~ +35°C	
<b>Humidity range</b>	Operating: max 100 % Storage: 95% max	
<b>Case material</b>	Aluminium extrusion 1.5 mm thick black anodised	
<b>Weight</b>	80 grams	

Lens Configurations					
AVCAM 705 Model no.	Lens Type	Horizontal Field angle	Vertical Field angle	Max. Aperture	Focal Length (mm)
3.8	Standard	54.0°	50.0°	F2.0	3.8
6	Optional	34.0°	26.0°	F2.2	6.0
8	Optional	26.0°	19.0°	F2.5	8.0
12	Optional	17.0°	13.0°	F2.5	12.0

CONNECTOR CABLE (optional)	MOUNTING BRACKETS (optional)		
			
EN3CF-2M	TP1 BOTTOM MOUNT	BB1 TOP MOUNT	WB1 WALL BRACKET

# Dimensions and pinouts



WIRING SIDE OF MATING CABLE SOCKET: SWITCHCRAFT EN3C6F